

International Program

Batch XV - 2023 / I

10
POINT
PDUS

ERMA
Certification Holder

12
PSB

LSP MKS
Certification Holder

International
Benchmarking and Master Class

ESG

Environmental
Social
Governance

in Digital Era

May 27th - June 2nd, 2023 | South Korea

www.thegrfrontiers.com

Organized by:



In Cooperation with:



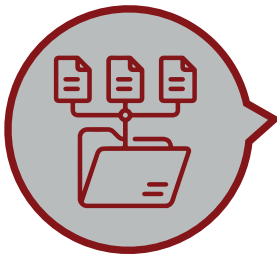
The Program

One-week workshop to provide an international benchmark on the practices related to environmental, social, and governance (ESG) in the digital era consisting of on-site learning at prominent organizations in South Korea and Master Class in Seoul City.

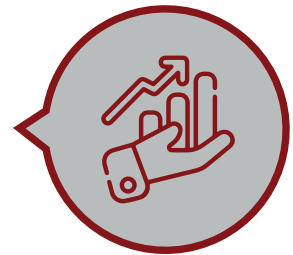
Benchmarking Visit

Participants will be able to benchmark their ESG practices against those of their global counterparts which are considered to have a higher maturity level to help them improve their performance and make informed decisions when it comes to implementing and managing their environmental, social, and governance (ESG) programs. During visit sessions, the participants will have the opportunity to get in-depth discussions about the various practices that are related to ESG, and how they can be used to improve the efficiency of their organizations.

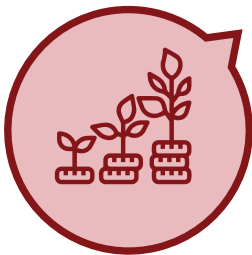
Some interesting topics to be discussed at the benchmarking visit:



The interrelationship between GRC and ESG toward SDG (Sustainable Development Goals). How the organization address this matter at board level?



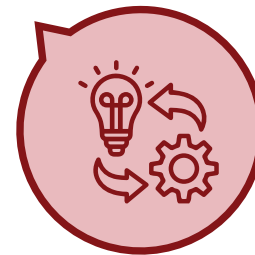
How to effectively overcome the ESG challenges and to exploit the ESG opportunities.



ESG investment trends and growth. How to implement good ESG? How to manage sustainability risks?



How to design and effective ESG strategy for all stakeholders? How to evaluate its effectiveness at the implementation level?



How to integrate ESG into the business process? How the organization cascade down from strategy to the operationalization.

MASTER CLASS

The program's last day will feature a Master Class, which will be delivered by experts. There will be one session that will focus on the wrap-up of the program, while other sessions will cover the digital aspects of ESG practice. These include the use of a GRC dashboard and the integration of ESG indicators with cyber risk governance.

The goal is to provide participants with the necessary knowledge and skills to improve their ESG practices in the Digital Era to help organizations manage their risks and improve their reputation.



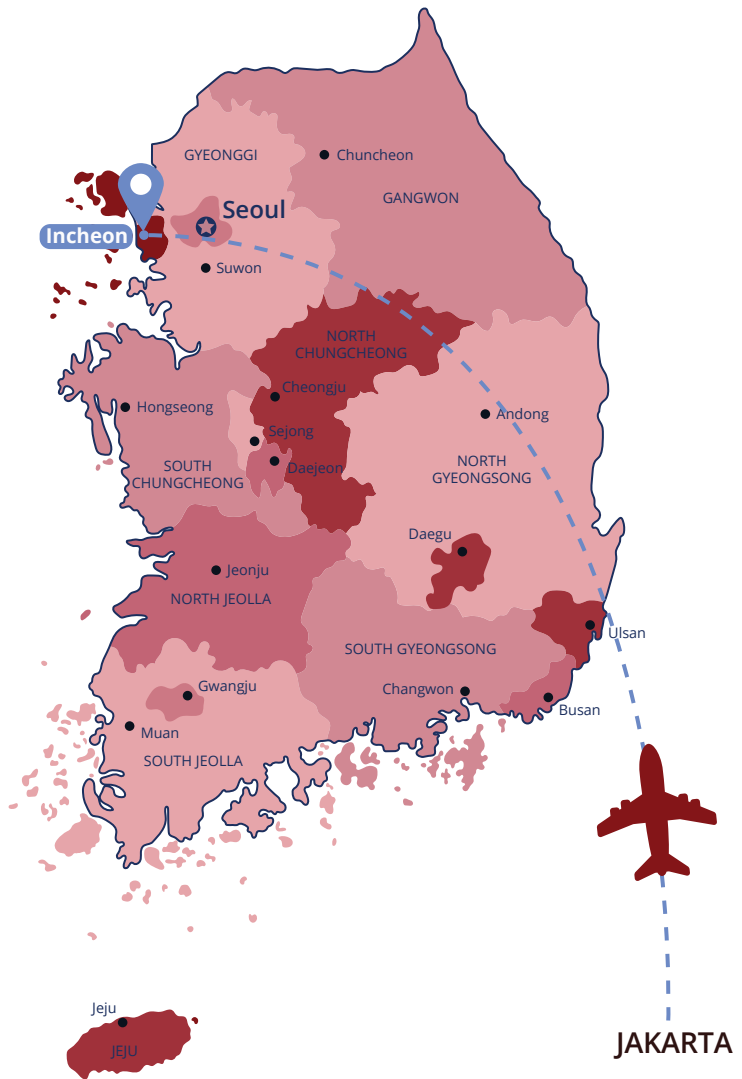
Institution Visit

Among others are:



Hanwha Life

*) To be confirmed



ITINERARY



Saturday, May 27 th , 2023	Depart from Jakarta	Wednesday, May 31 st , 2023	Master Class B L D
Sunday, May 28 th , 2023	Arrive in Incheon, South Korea B Excursion L D	Thursday, June 1 st , 2023	Excursion B L D
Monday, May 29 th , 2023	On-site Learning B L D	Friday, June 2 nd , 2023	Excursion B Depart from Incheon to Jakarta
Tuesday, May 30 th , 2023	On-site Learning B L D	B = Breakfast; L: Lunch; D: Dinner The itinerary may be subject to change	

PREVIOUS VISITED COUNTRIES



BENCHMARKING

Our Previous Visited Countries



Some of the previous visited institutions:



WHY THIS PROGRAM



Due to the increasing complexity of today's global business environment, both public service and business professionals need to continuously update their knowledge about risk management, compliance, and governance (GRC). To help them do so, we have created a variety of Master Class and Benchmarking programs that are designed to help participants gain a deeper understanding of ESG and GRC. These programs are also created to help them implement effective ESG practices within global corporate and public services environment in their organizations.

LEARNING OUTCOMES

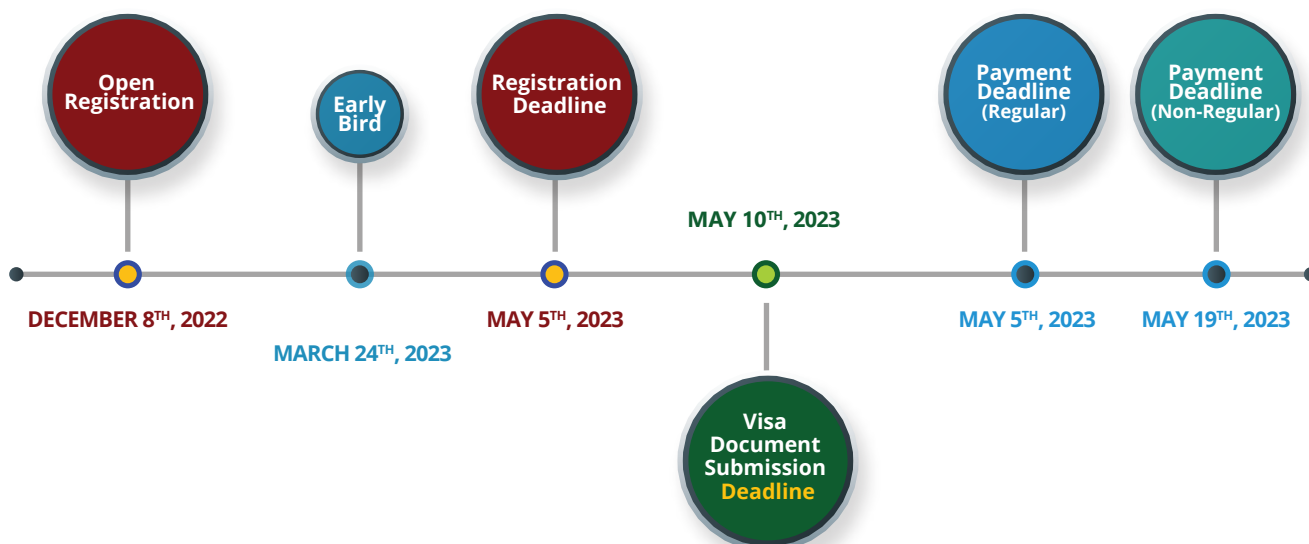
- ▲ Gain a more comprehensive understanding of the various aspects of ESG and governance toward SDG
- ▲ Help participants enhance their capabilities in ESG and GRC practices. They will also help them identify areas of their organizations where they can improve their performance.
- ▲ Understand how to benchmark their organizations' ESG and GRC practices against those of other companies in South Korea
- ▲ Improve their capabilities in addressing the challenges and opportunities of today's digital world
- ▲ Expand the network of world-class professionals.

WHO SHOULD PARTICIPATE



- ▲ Members of the Board of Directors and Board of Commissioners
- ▲ Vice President or Senior Management Members
- ▲ Members of Risk Oversight Committee
- ▲ Members of Audit Committee
- ▲ ESG Consultants
- ▲ High Level Government Officers
- ▲ ESG Professionals

REGISTRATION TIMELINE



REGISTRATION

[Click Here](#)

bit.ly/thegrcfrontiers-2023



www.thegrcfrontiers.com

Organized by:



In cooperation with:



CONTACT US

CRMS

Jl Batununggal Asri No. 18
Bandung 40267, Indonesia
Phone: (+62)22 8730 1035
Mobile: (+62)811 22 333 075

Email: secretariat@crmsindonesia.org
www.crmsindonesia.org

OUR SOCIAL MEDIA

